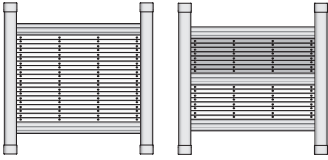
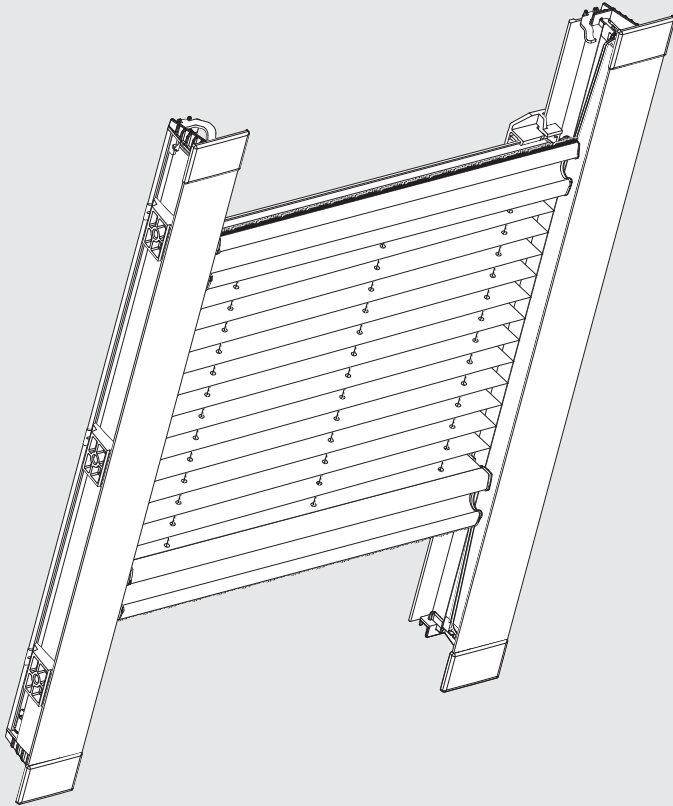


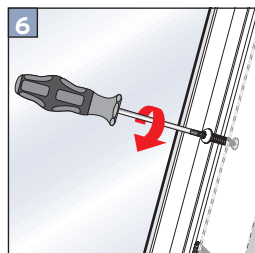
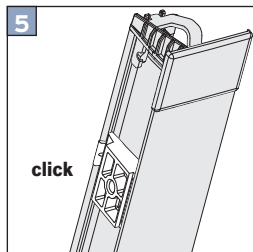
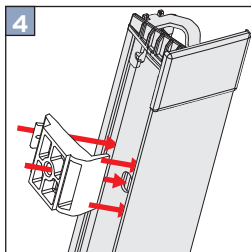
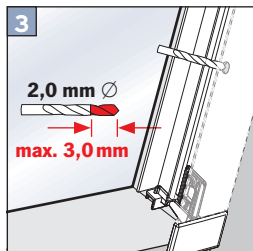
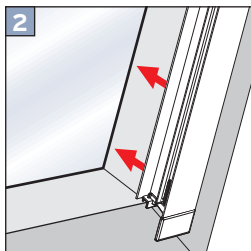
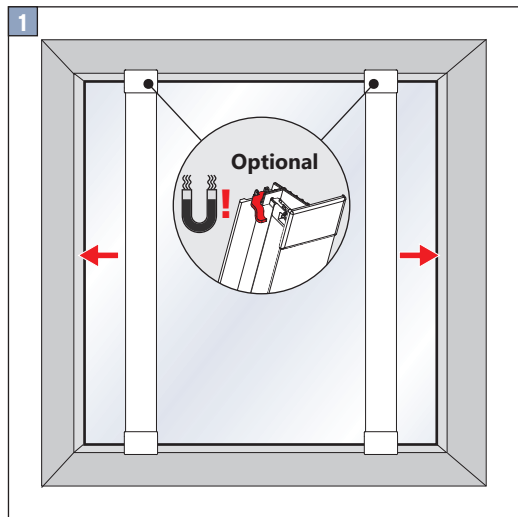
## Montageanleitung für Cosiflor DF 20 Comfort und DF 30 Comfort



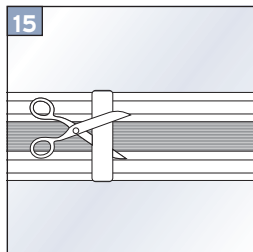
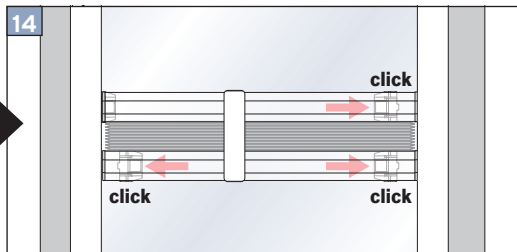
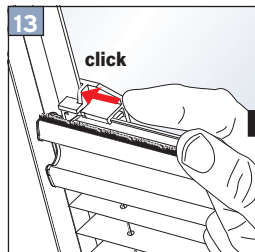
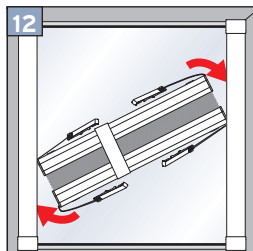
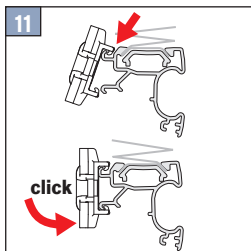
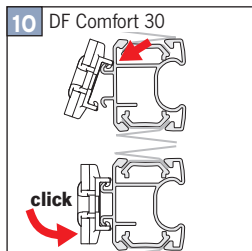
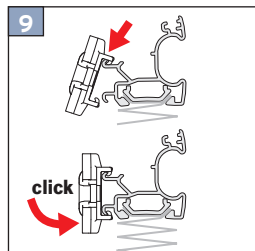
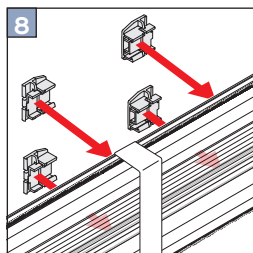
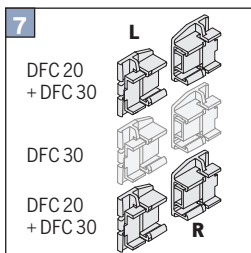
Bitte nur beiliegende Schrauben verwenden.

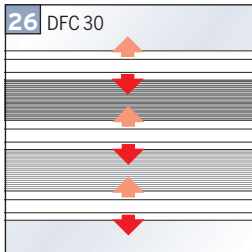
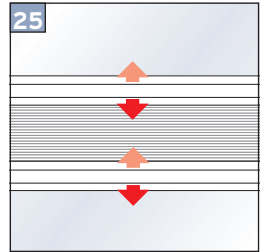
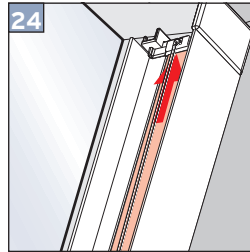
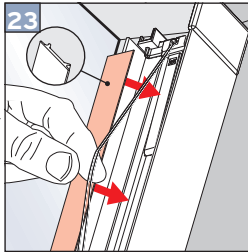
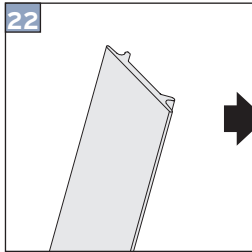
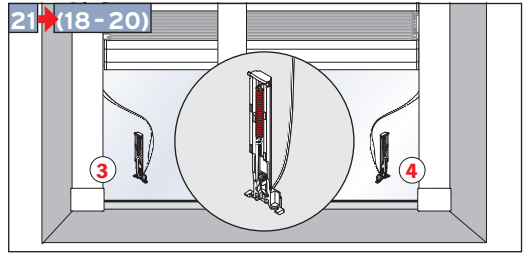
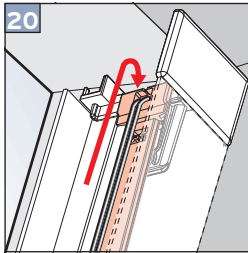
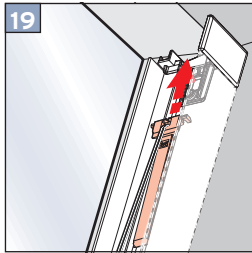
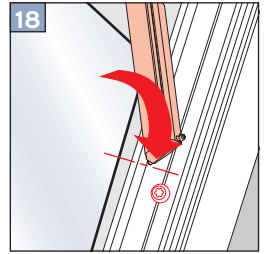
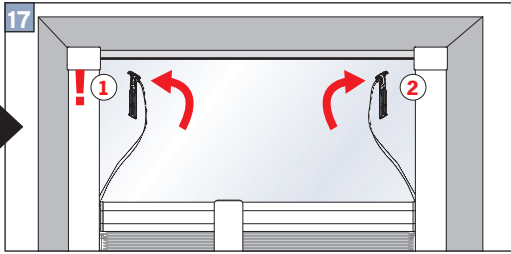
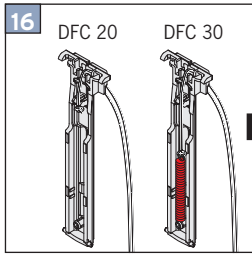


# MONTAGE

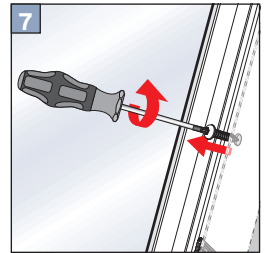
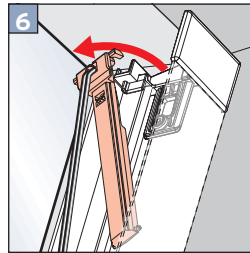
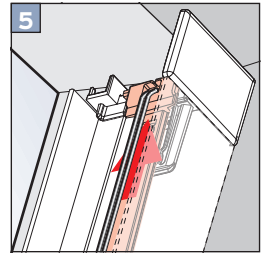
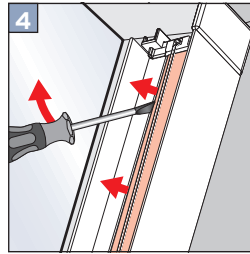
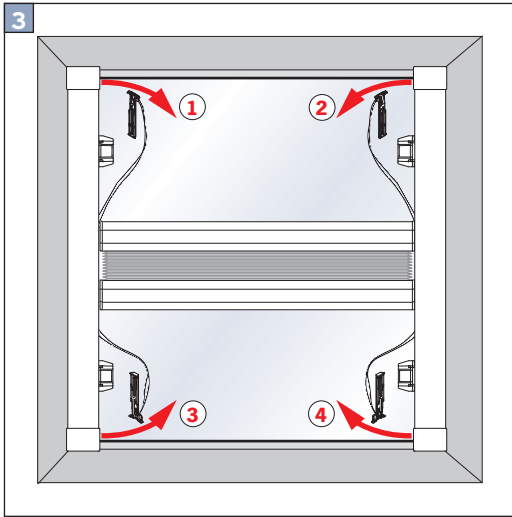
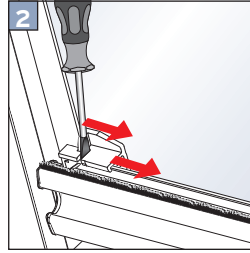
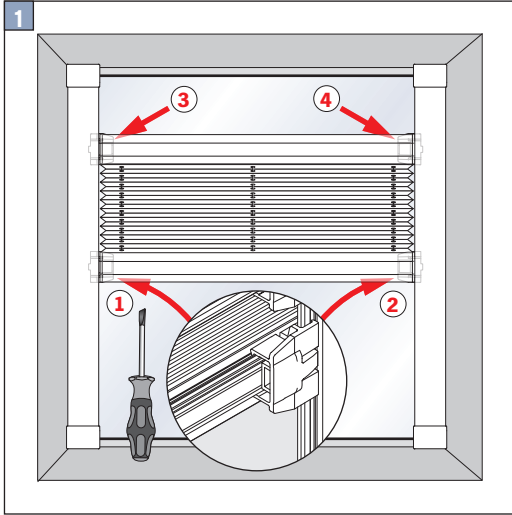


Schrauben nicht überdrehen!

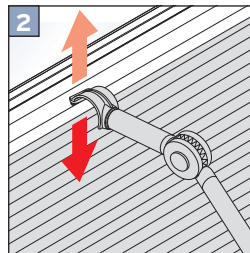
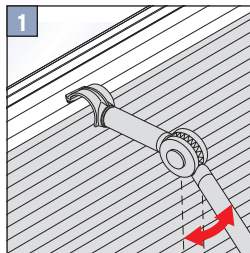
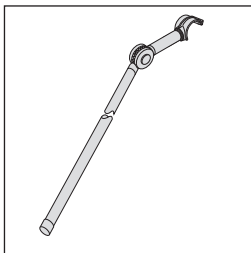




## DEMONTAGE



### Optional: Bedienstab



Die Dachfenster Comfort Modelle sind nicht nur wahre Alleskönner, sondern überzeugen auch durch ihre Stabilität und komfortable Bedienung. Diese Plissees sind von unten sowie von oben zu betätigen und ermöglichen so einen umfassenden Sonnen- und Hitzeschutz. Das Modell DF 30 Comfort wird überwiegend als Tag- und Nachtplissee eingesetzt. Hier kann beispielsweise ein blickdichter oder transparenter Stoff für den Tag und ein abdunkelnder Wabenstoff für die Nacht ausgewählt werden.

Die Comfort-Ausführungen verfügen über seitliche Führungsschienen und haben keine hervorstehenden Griffe. Die Bedienung erfolgt über die in der Plisseeschiene befindliche Griffmulde per Hand oder mit Hilfe eines speziellen [Bedienstabes](#).

Alle Plisseemodelle finden Sie in unserem [Livoneo.de-Onlineshop](#).

Zu den Montageanleitungen gelangen Sie [hier](#).