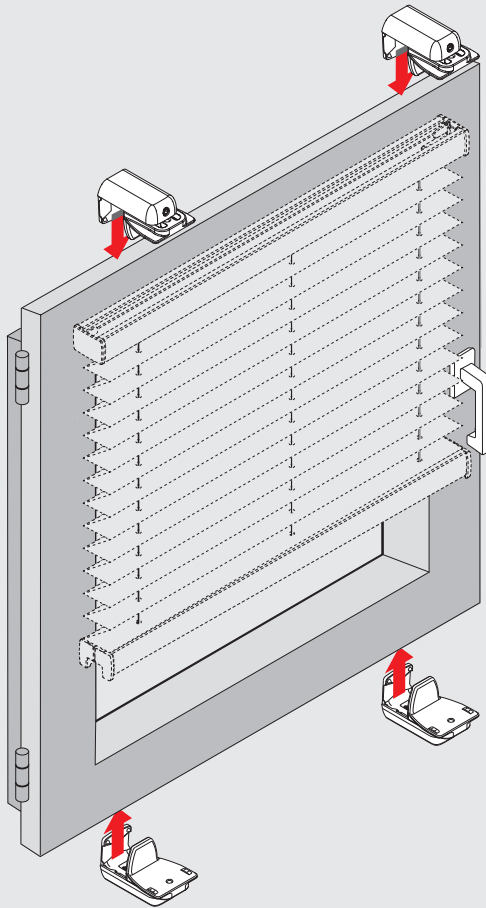


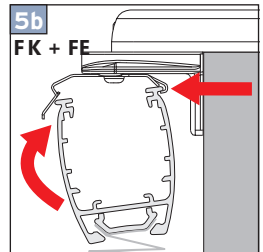
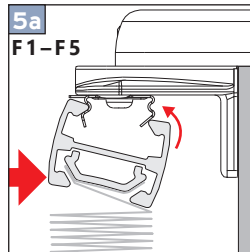
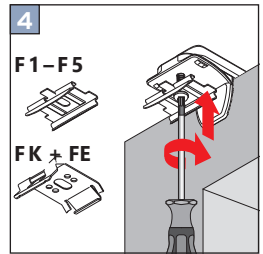
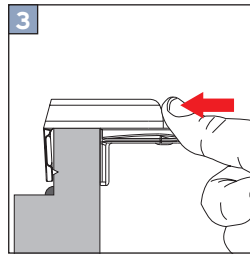
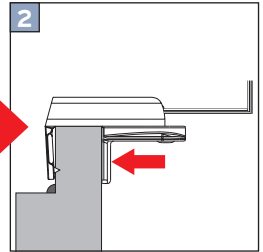
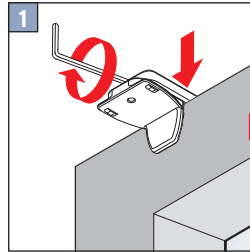
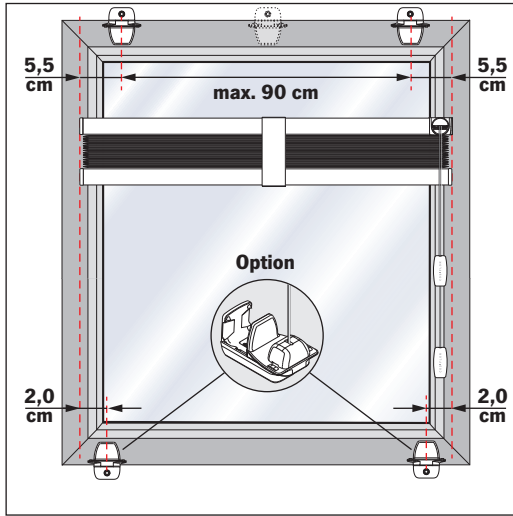
## Montage mit Klemmträgern

F1, F3, F5, FK, FE, VS1, VS2, VS3, VS3 SD, VS4 S1, VS4 S2

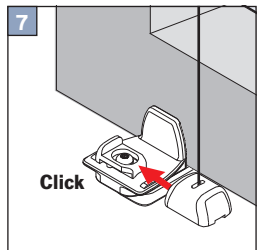
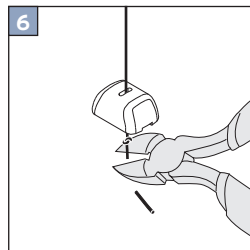
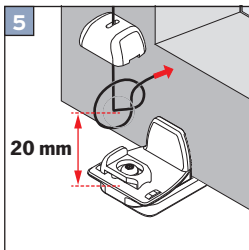
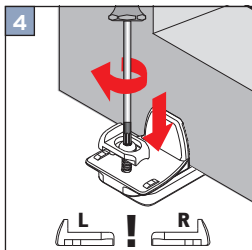
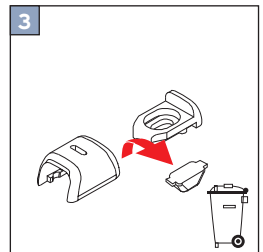
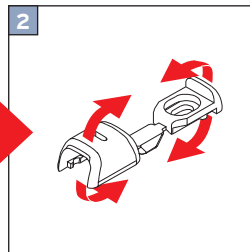
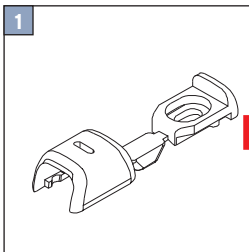


# Montage

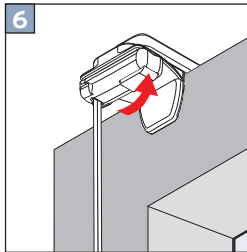
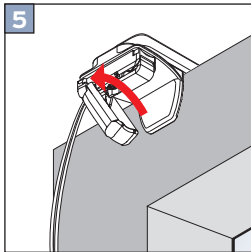
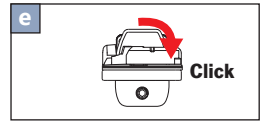
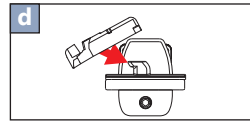
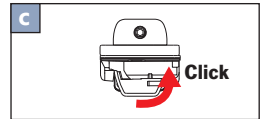
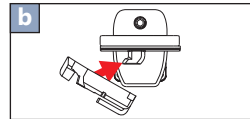
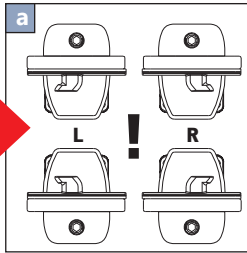
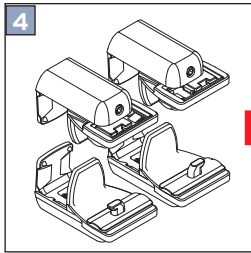
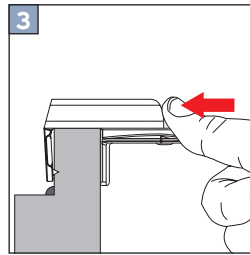
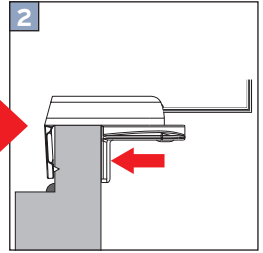
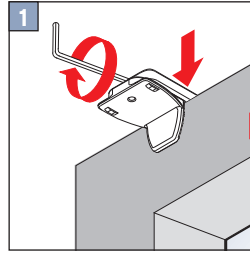
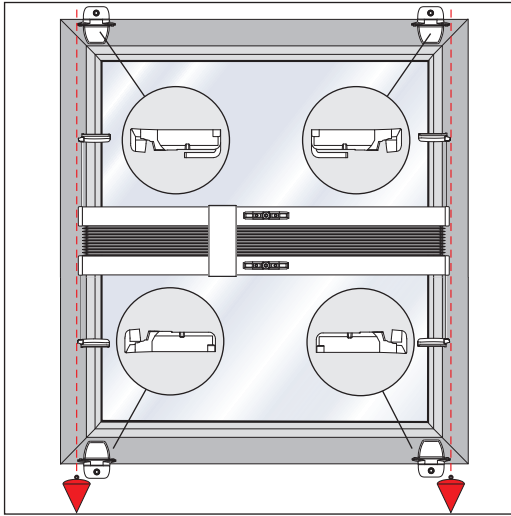
## F1, F3, F5, FK, FE



### Optional: Pendelsicherung

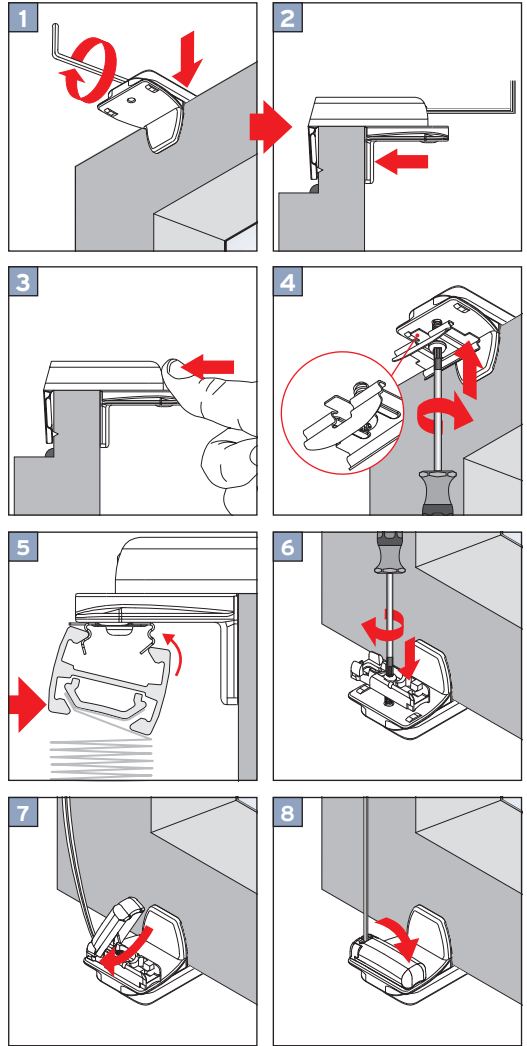
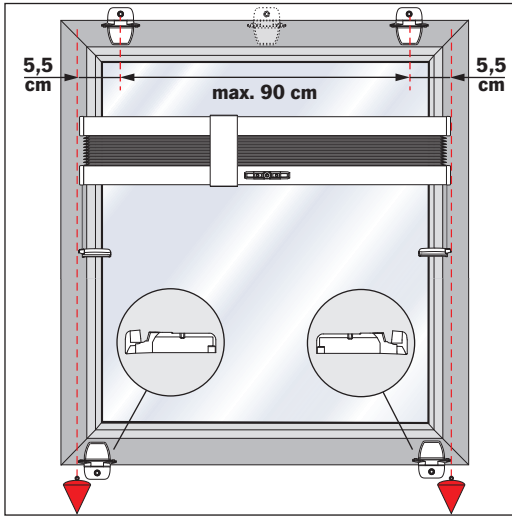


# Montage VS2



# Montage

## VS 1, VS 3, VS 3 SD, VS 4 S 1, VS 4 S 2



Eine sehr beliebte Montageart ohne Bohren ist die Anbringung mit den praktischen Klemmträgern. Die Klemmträger werden je nach Plisseeart oben und unten am Fensterflügel montiert. Das Plissee wird anschließend an den Klemmträgern befestigt.

- Die Klemmträger lassen sich auch nach vielen Jahren problemlos und ohne Rückstände wieder entfernen.
- Diese [Montageart](#) bringt weiterhin den Vorteil mit sich, dass sie für jegliche Fensterarten geeignet ist: egal ob Holz mit Gummidichtung, Aluminium oder Kunststoff.

[Hier](#) finden Sie eine Übersicht aller Plissee Montageanleitungen.