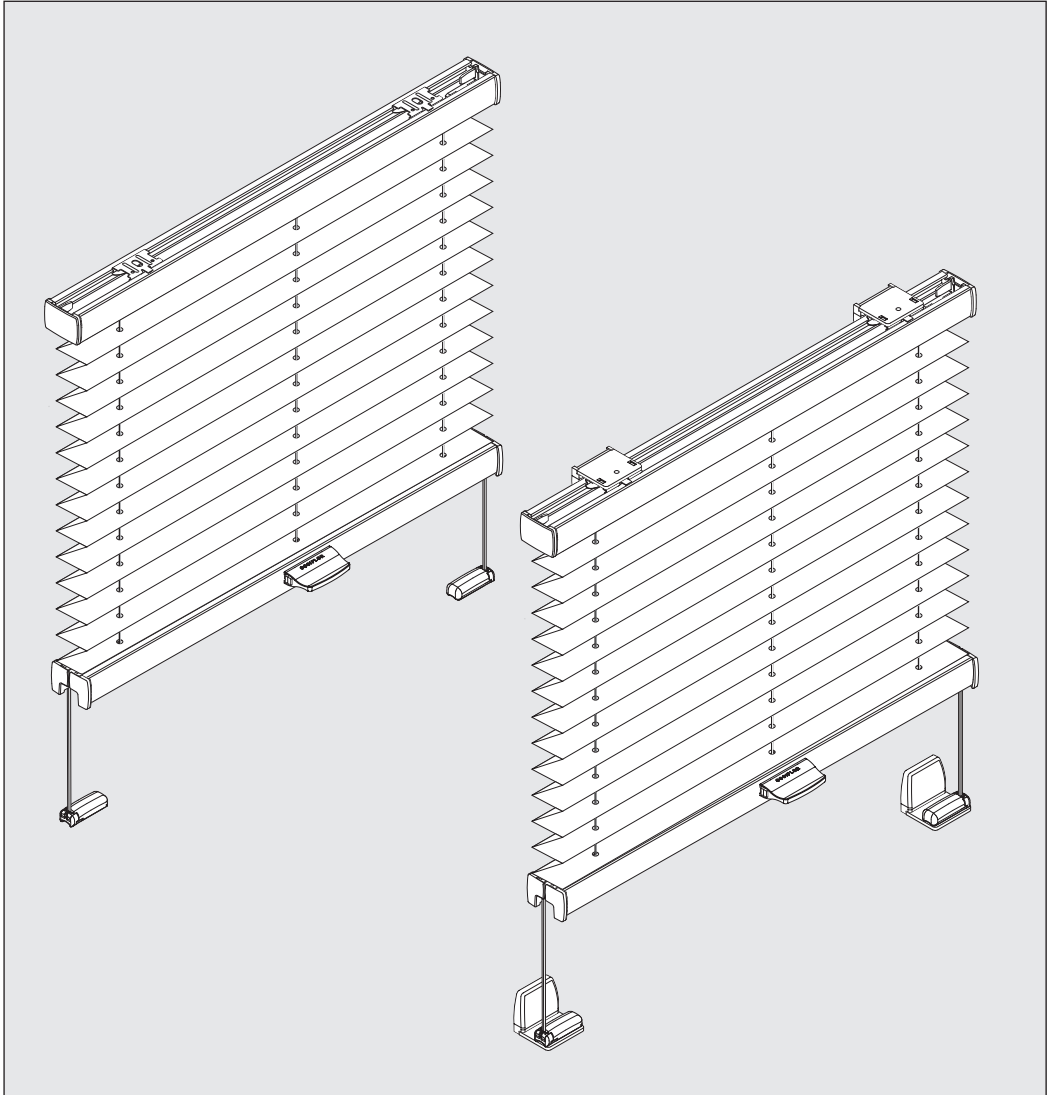
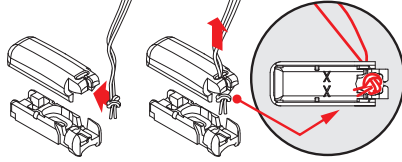
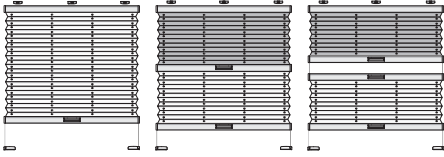
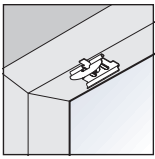
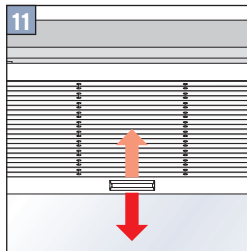
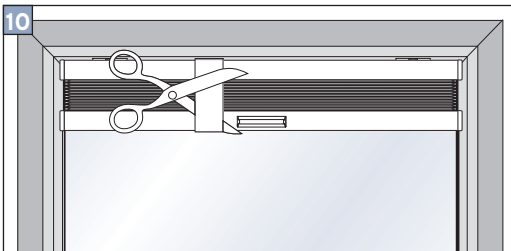
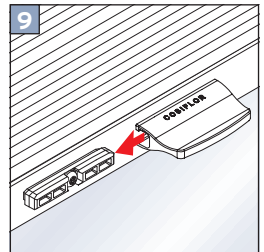
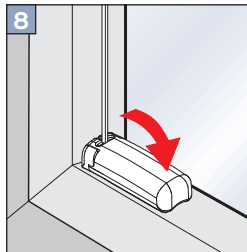
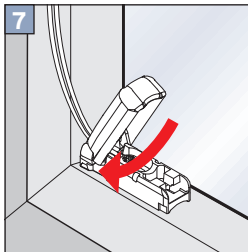
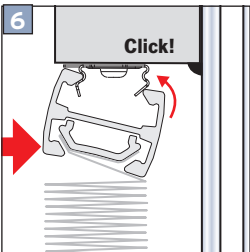
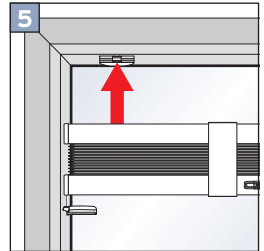
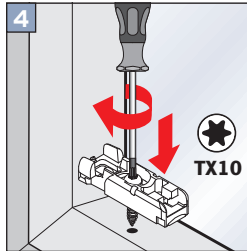
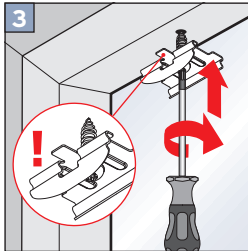
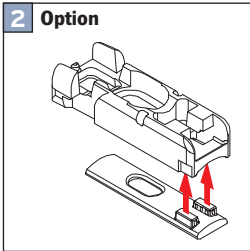
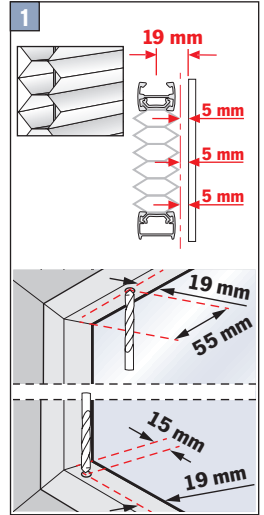
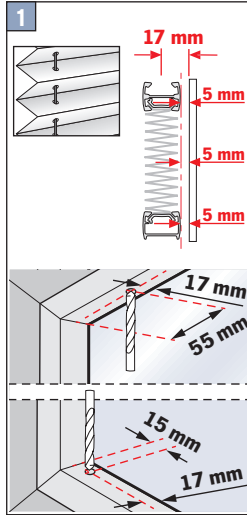
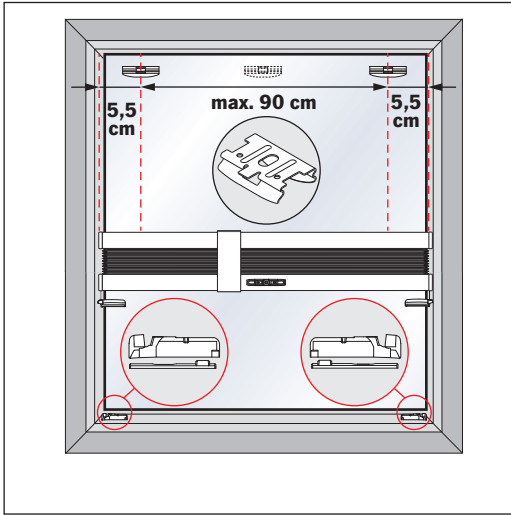
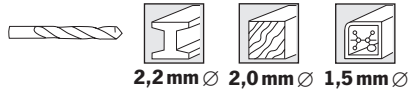


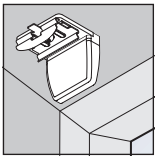
Montageanleitung für Cosiflor VS 1, VS 3, VS 3 SD



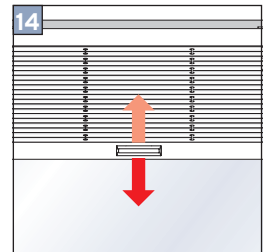
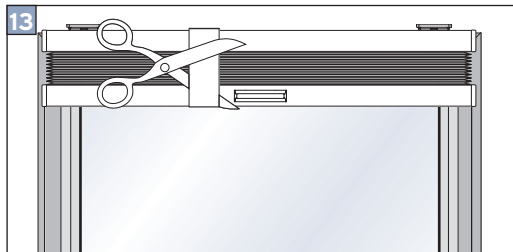
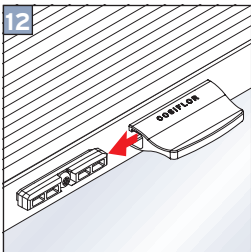
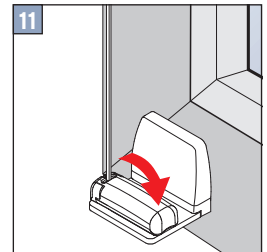
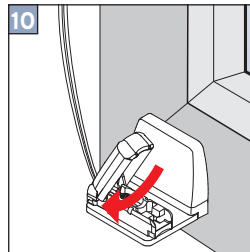
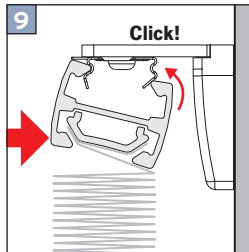
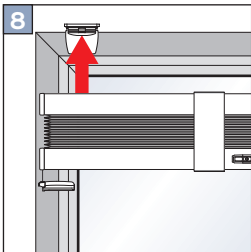
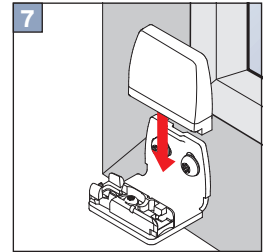
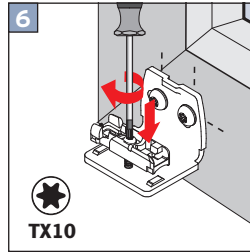
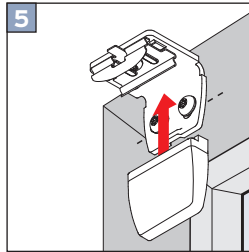
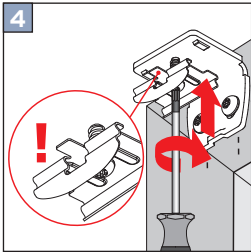
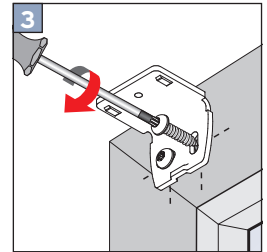
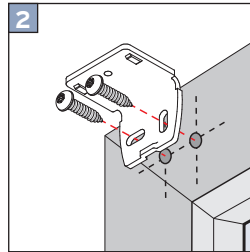
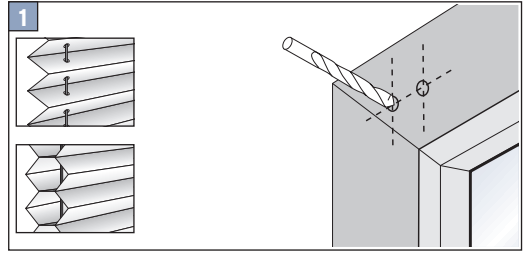
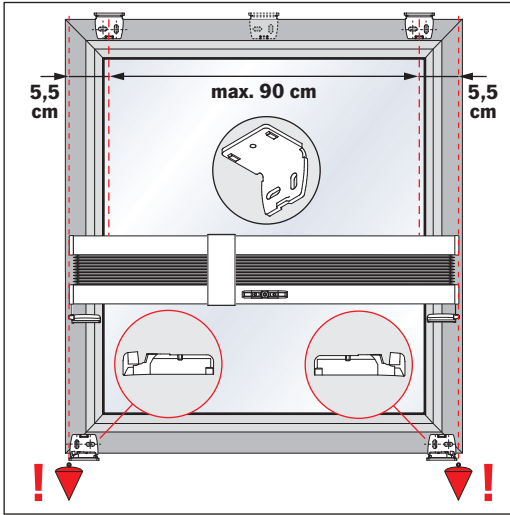


Falzmontage

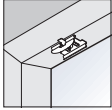




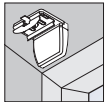
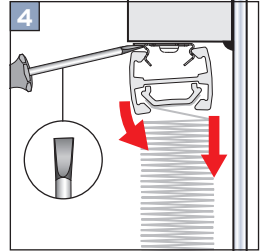
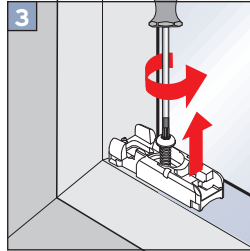
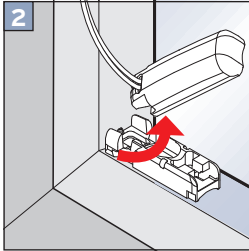
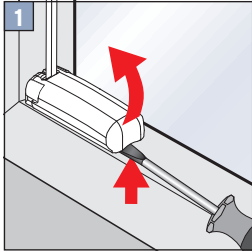
Winkelmontage



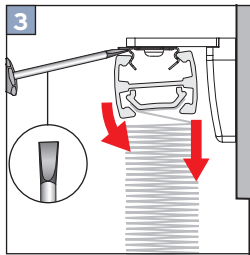
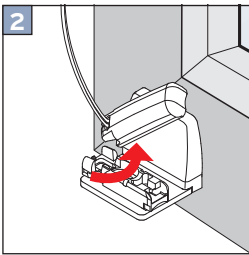
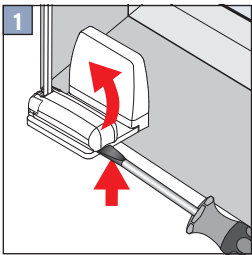
DEMONTAGE



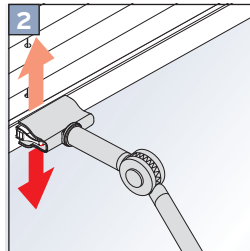
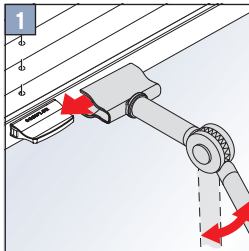
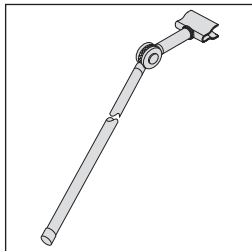
Falzmontage



Winkelmontage



Optional: Bedienstab



Ein [Plissee](#) verbindet die Funktionalität einer Jalousie mit der Wohnlichkeit von Vorhängen. Hochwertige Stoffe machen einen Falstore zu einem wunderschönen Hingucker und die einfache Bedienung zu einem praktischen Schutz für Ihre Räume. Die Modelle VS 1, VS 3 und VS 3 SD sind zudem auf unterschiedlichste Weisen zu montieren - egal, ob Sie den Sichtschutz anschrauben oder lieber bohrfrei mit Klemmträgern montieren wollen.

Bei Rückfragen zur Montage stehen wir gern unter mail@livoneo.de zur Verfügung.

[Hier](#) gelangen Sie zu allen Montageanleitungen für Plissees.