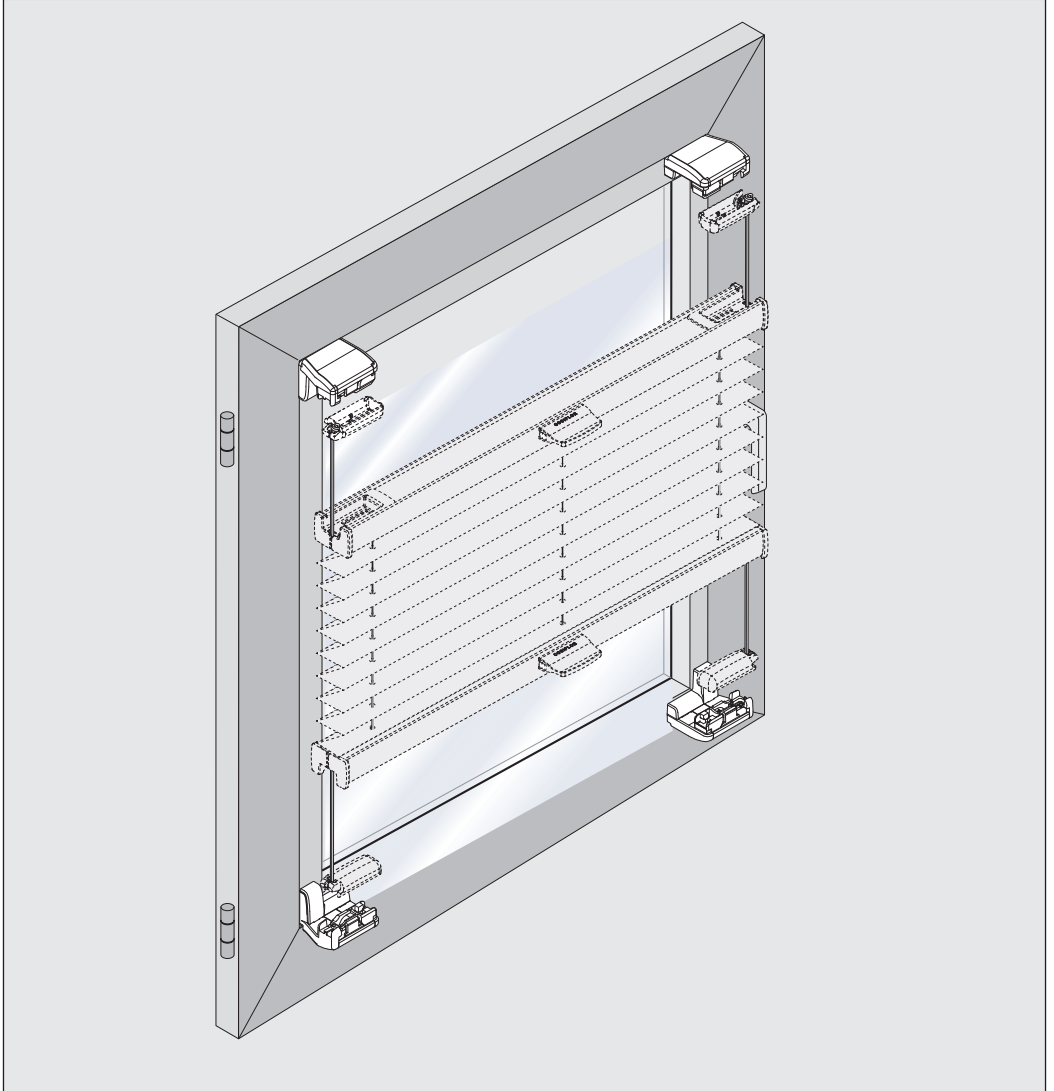
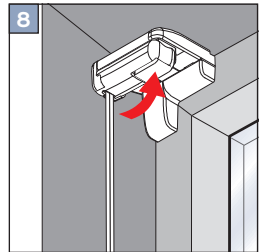
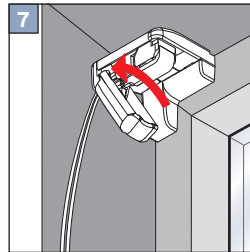
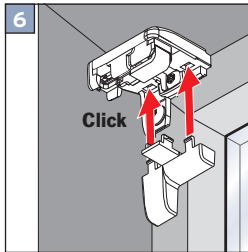
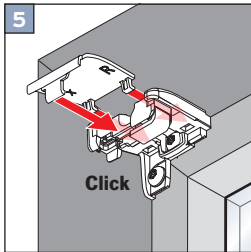
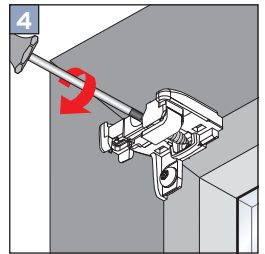
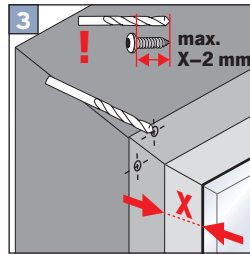
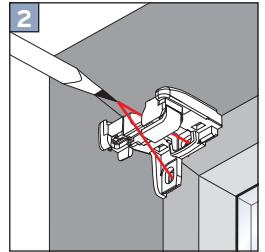
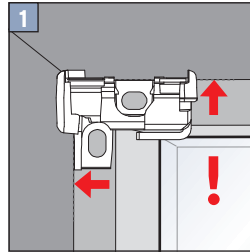
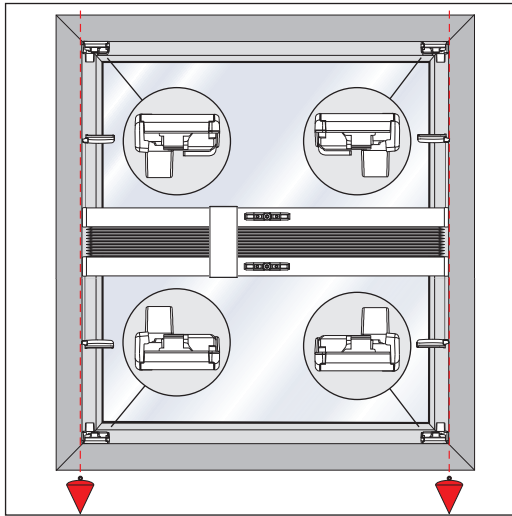


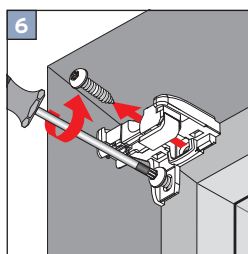
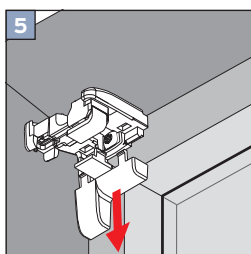
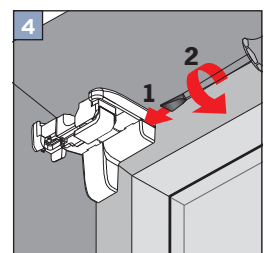
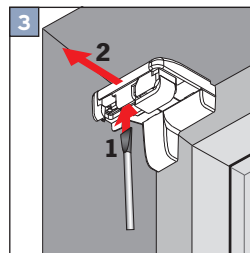
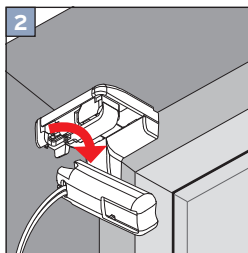
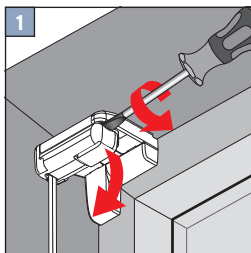
Montage mit Glasleistenwinkeln
VS 2



Montage VS 2



DEMONTAGE



Die innovativen Glasleistenwinkel werden mit kleinen Schrauben direkt in den Ecken der äußeren Glasleisten auf dem Fensterrahmen angebracht. An diesen Montagewinkeln wird anschließend Ihr [Plissee](#) angebracht.

Zur Übersicht aller Montageanleitungen gelangen Sie [hier](#).