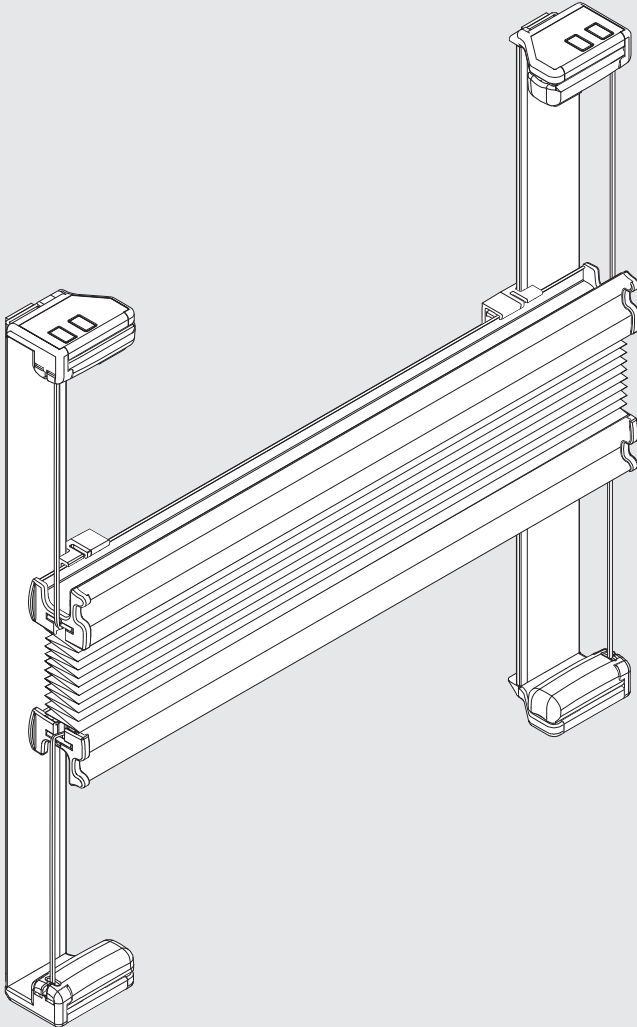
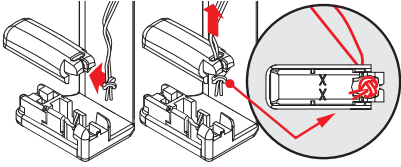
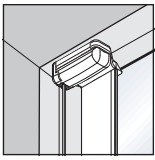
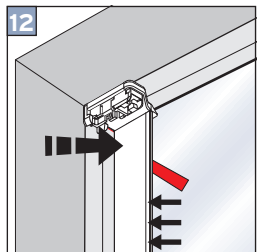
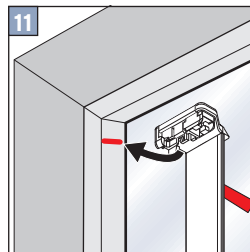
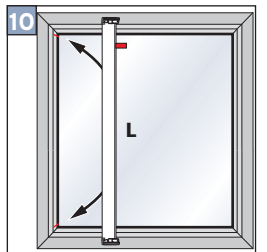
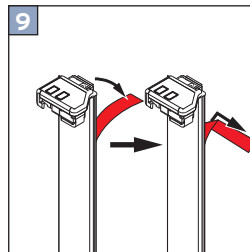
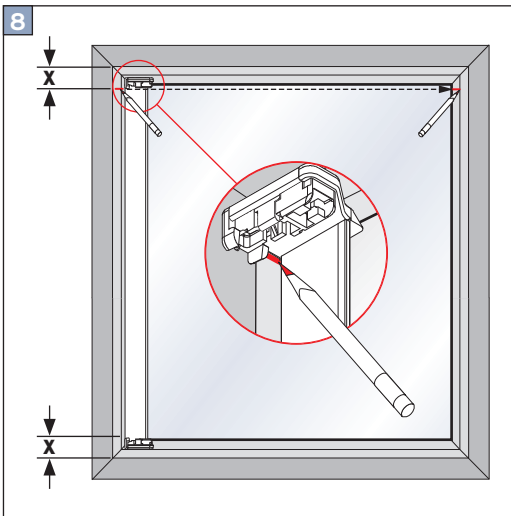
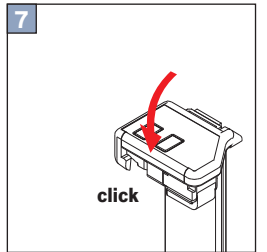
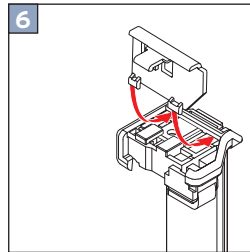
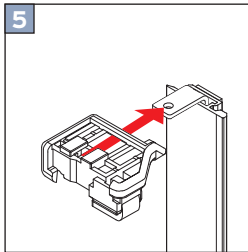
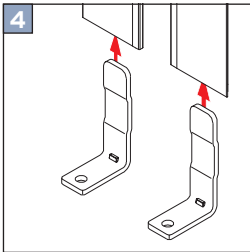
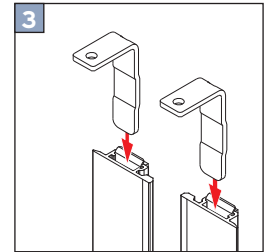
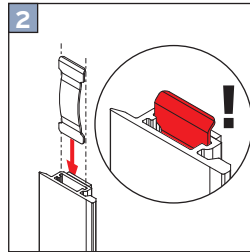
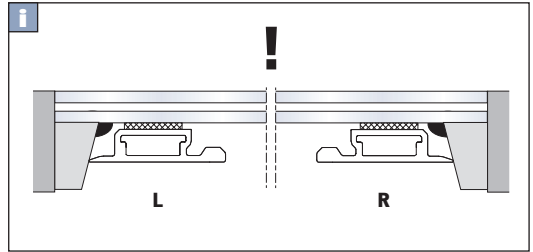
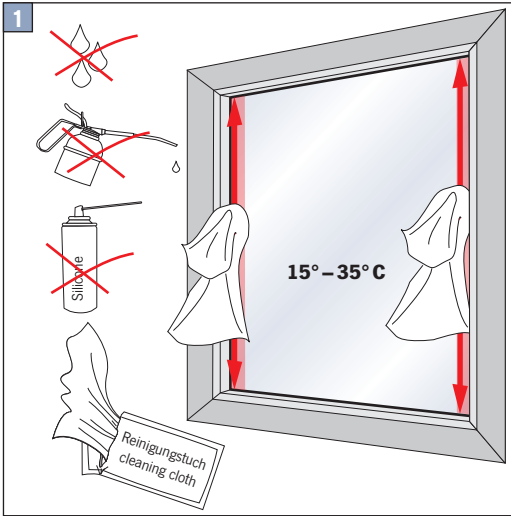


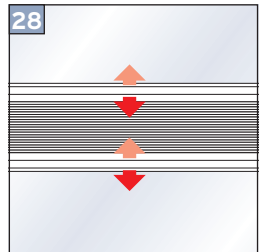
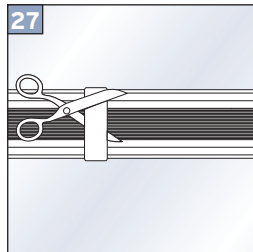
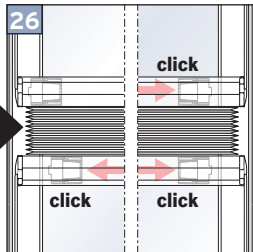
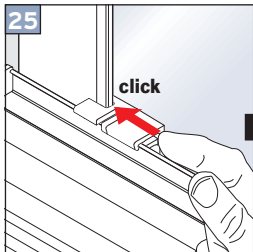
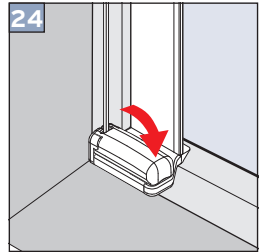
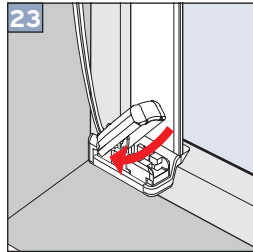
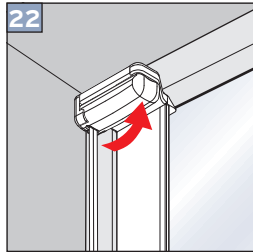
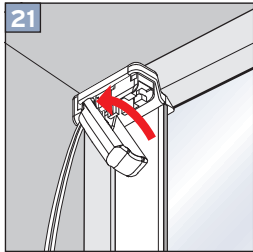
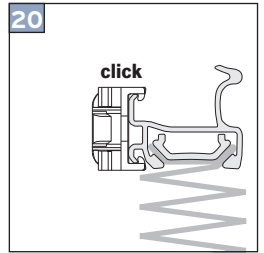
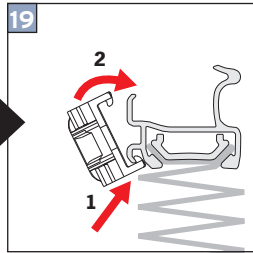
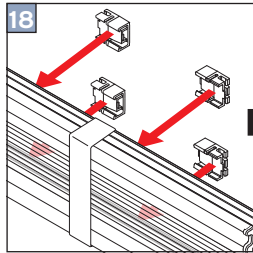
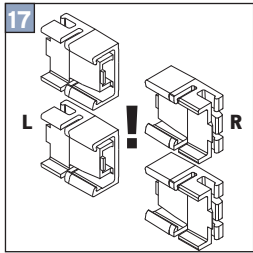
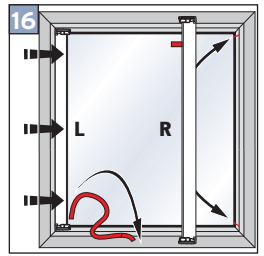
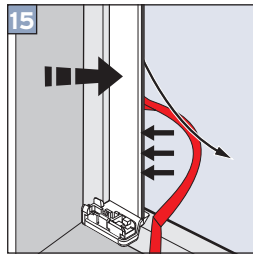
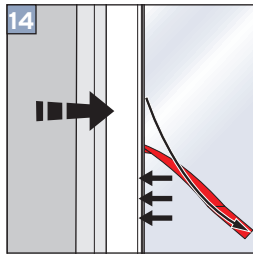
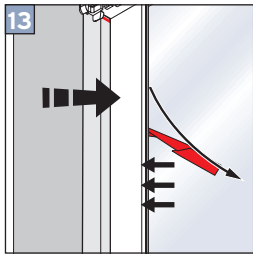
Montageanleitung für Cosiflor VS 2 Slide





Falzmontage

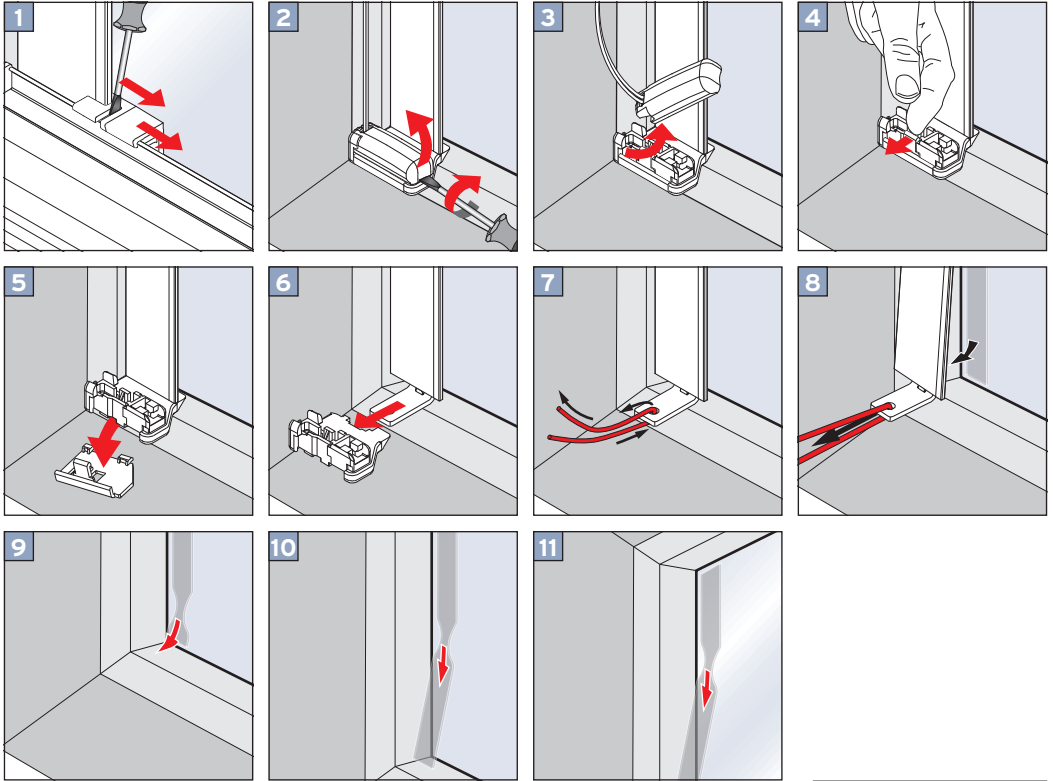




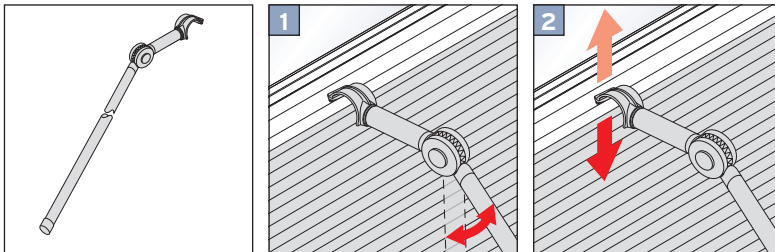
Wichtig!

Luftenschlüsse innerhalb der Klebefläche stellen keinen Reklamationsgrund dar, solange die Funktion des Profils nicht beeinträchtigt wird.

DEMONTAGE



Optional: Bedienstab



Bei dem VS2 Slide Modell werden die Klebeleisten rechts und links am Scheibenrand geklebt. An diesen Klebeleisten wird anschließend das Plissee montiert. Das Modell VS2 Slide bietet dank der Führung der Schienen eine komfortable Bedienung des Plisseees. Ein weiterer Vorteil: Die Montage ist nahezu bei allen Fensterarten möglich - egal ob Holz, Aluminium oder Kunststoff.

Bei Rückfragen zur Montage stehen wir gern unter mail@livoneo.de zur Verfügung. Bitte geben Sie bei Rückfragen Ihre Bestellnummer und Telefonnummer an, so können wir am schnellsten auf Ihre Anfrage reagieren.

[Hier](#) gelangen Sie zu allen Plissee Montageanleitungen.