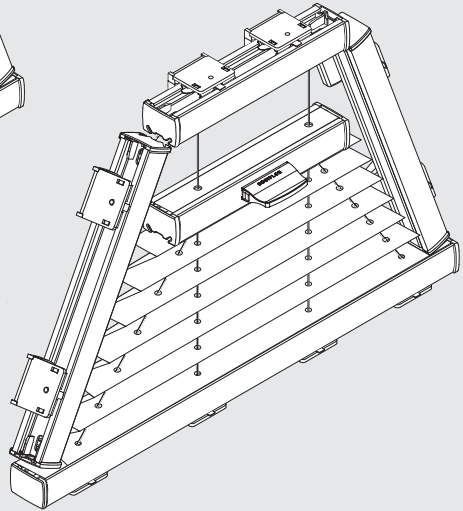
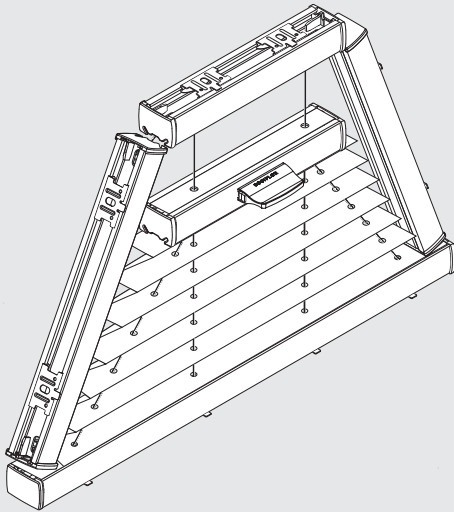
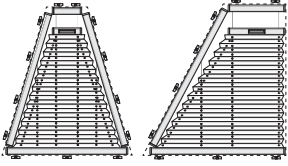
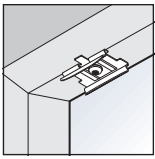
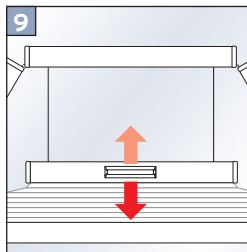
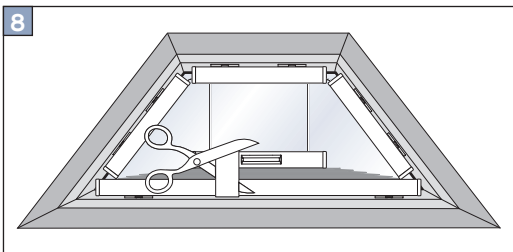
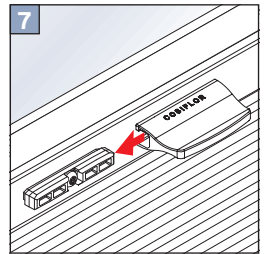
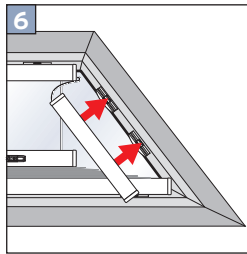
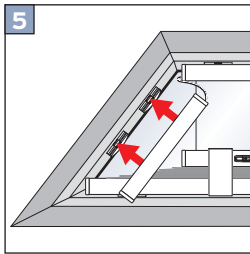
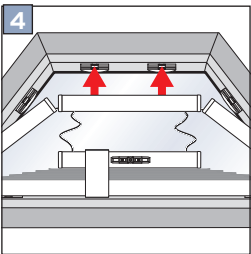
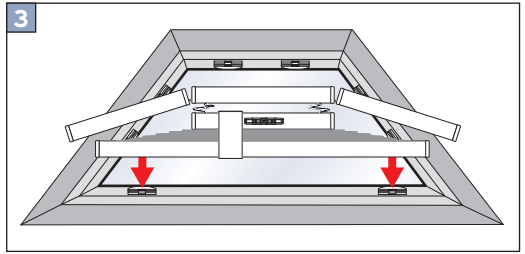
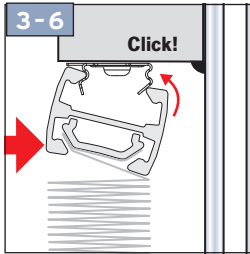
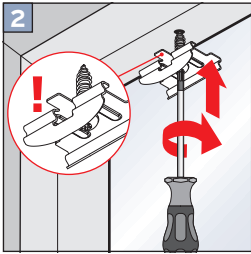
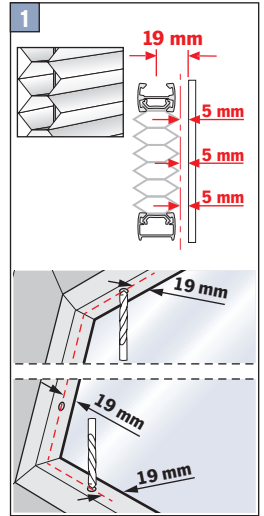
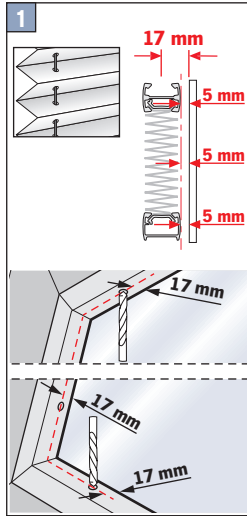
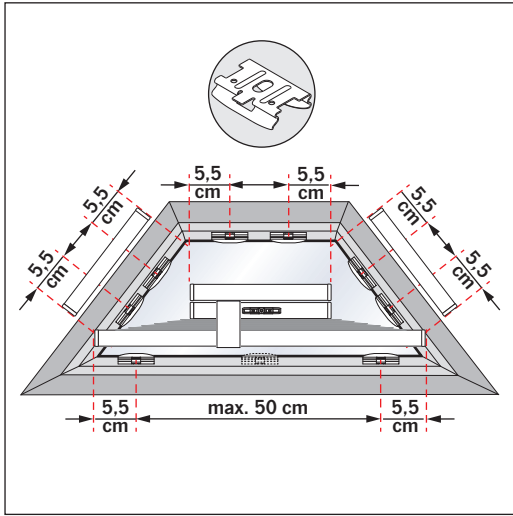
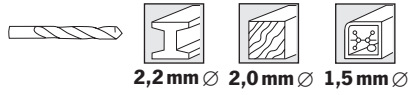


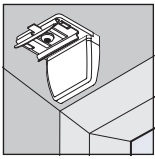
## Montageanleitung für Cosiflor VS 7, VS 8



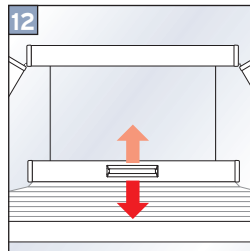
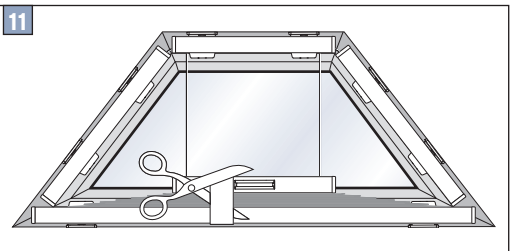
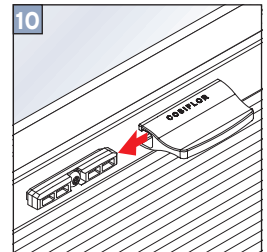
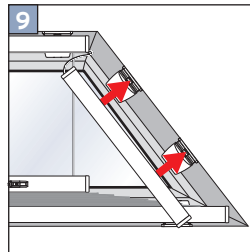
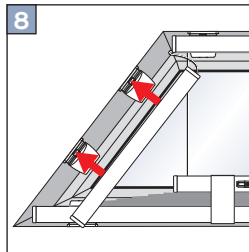
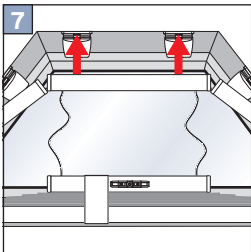
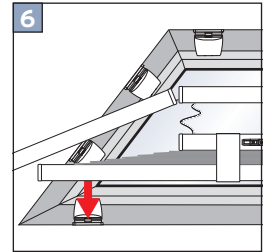
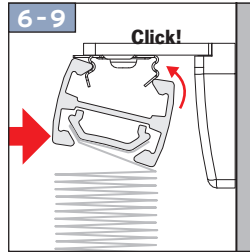
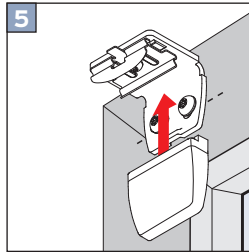
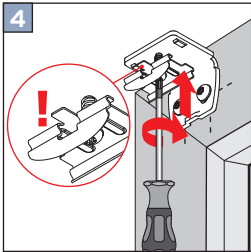
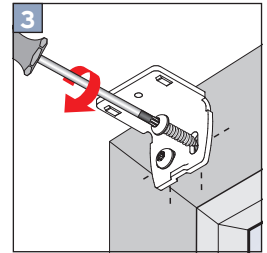
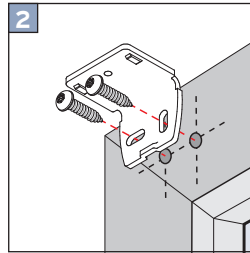
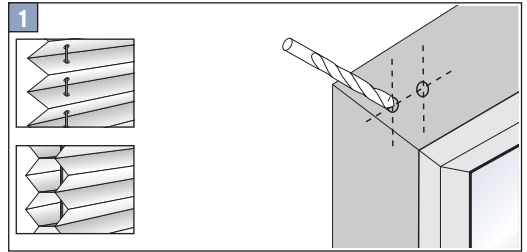
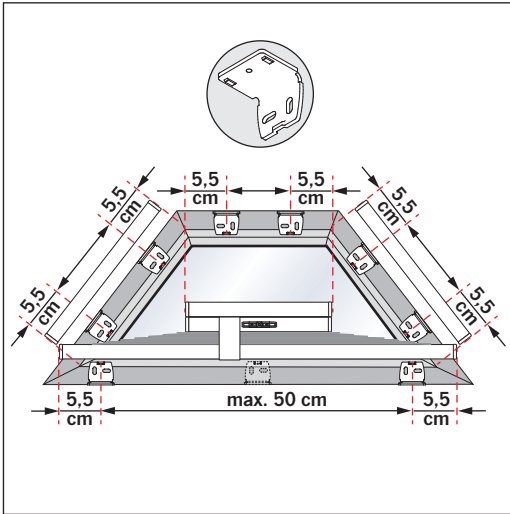


# Falzmontage



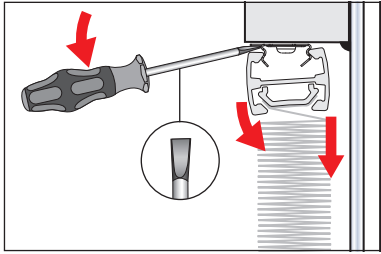


## Winkelmontage

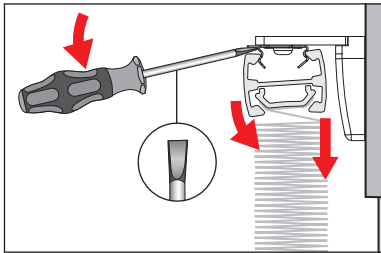


## DEMONTAGE

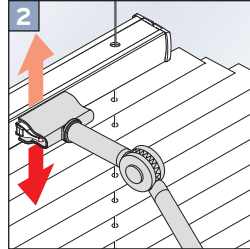
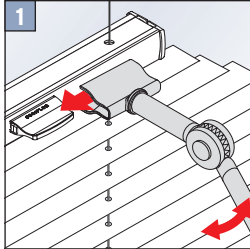
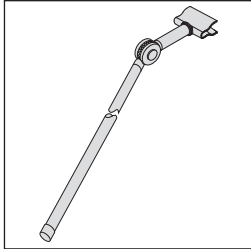
### Falzmontage



### Winkelmontage



### Optional: Bedienstab



Die Plisseetypen VS7 und VS8 sind für Senkrechtfenster mit einer oder zwei Schrägen geeignet. Solche Fenster sind oftmals beispielsweise an Giebelfenstern zu finden. Die Plissees können von oben nach unten geöffnet werden. Die Montage kann entweder im Falz vor dem Glas oder am Fensterflügel mit Hilfe von Winkeln erfolgen. Sofern der Falz abgeschrägt ist, empfehlen wir für die Falzmontage zusätzlich [Ausgleichskeile](#) mitzubestellen. Somit können die schrägen Montageflächen ausgeglichen werden.

### [Übersicht aller Montageanleitungen](#)

Bei Rückfragen zur Montage stehen wir gern unter [mail@livoneo.de](mailto:mail@livoneo.de) zur Verfügung. Bitte geben Sie bei Rückfragen Ihre Bestellnummer und Telefonnummer an, so können wir am schnellsten auf Ihre Anfrage reagieren.