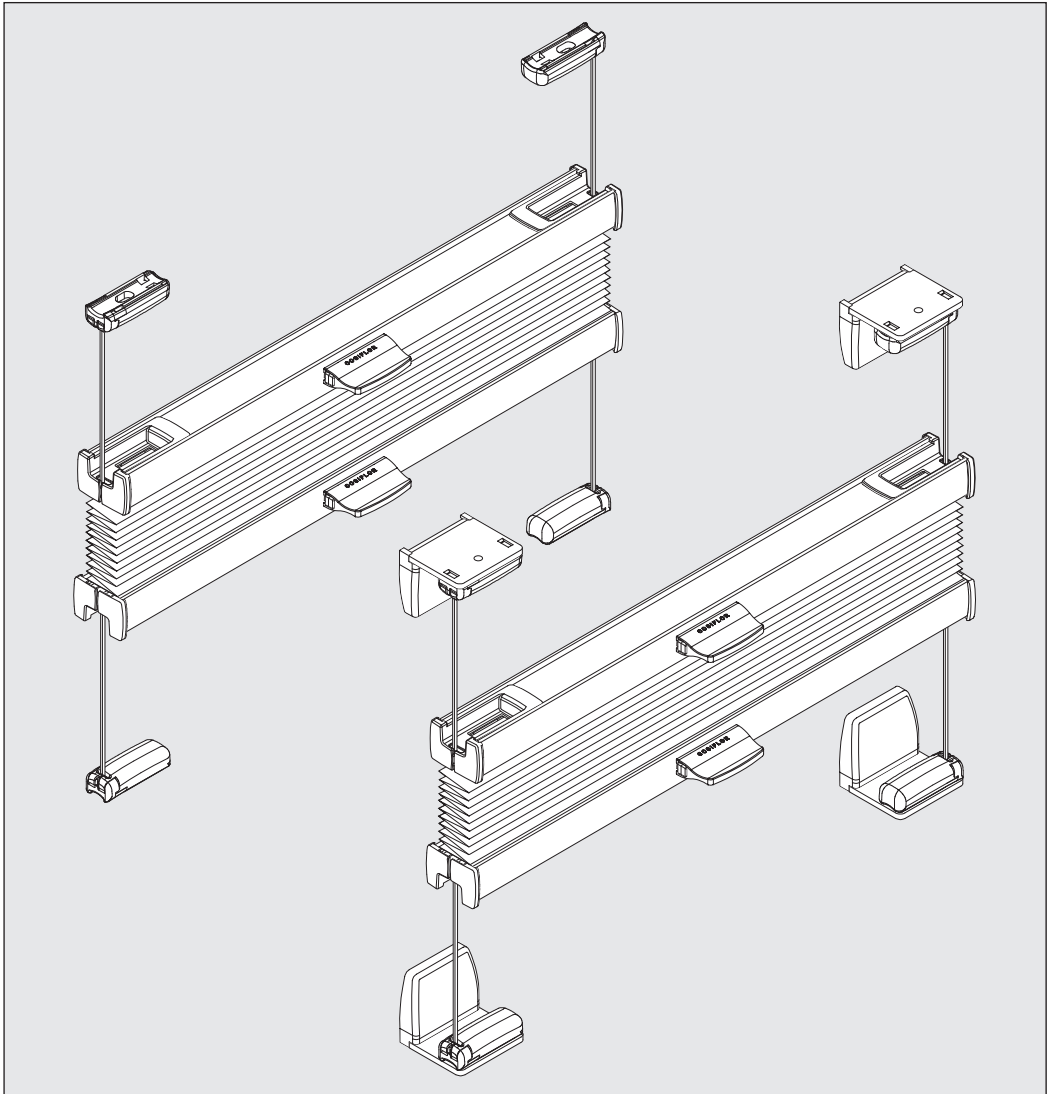
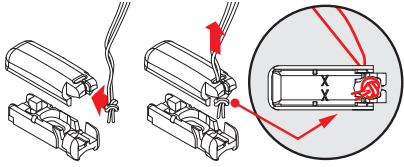
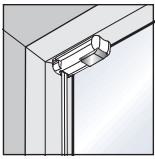
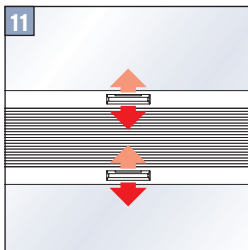
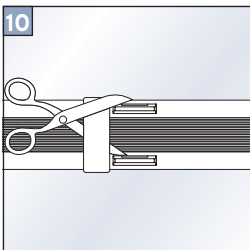
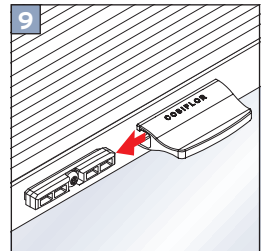
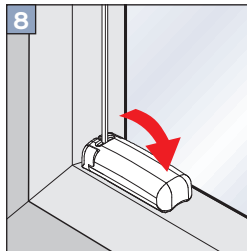
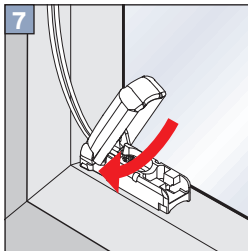
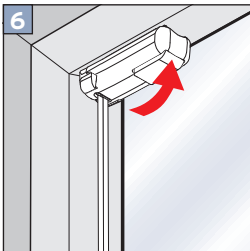
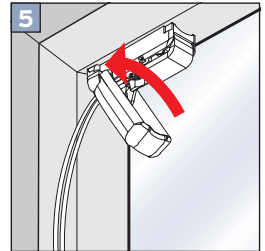
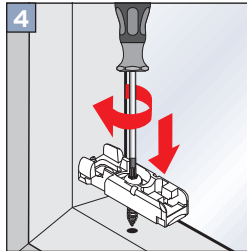
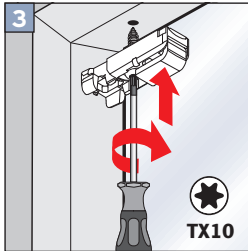
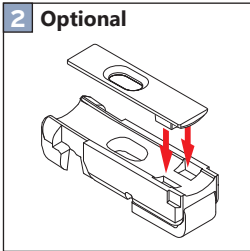
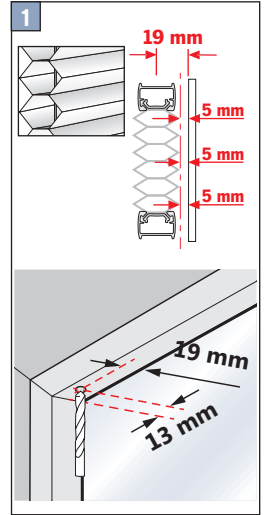
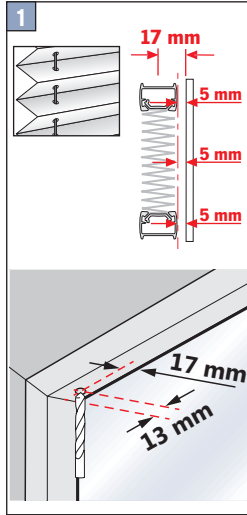
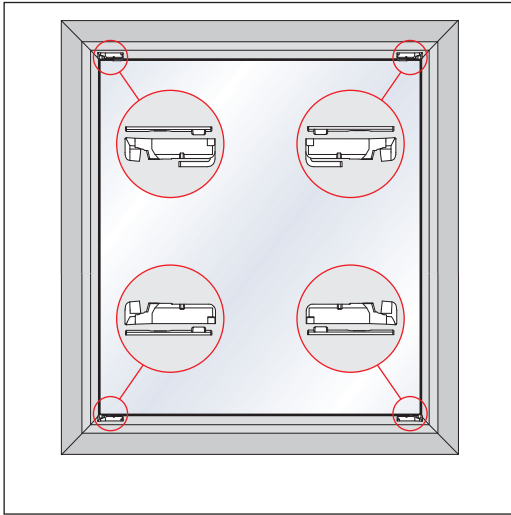
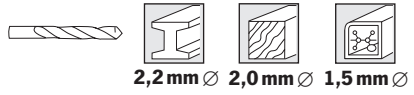


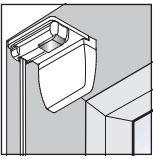
Montageanleitung für Cosiflor VS 2



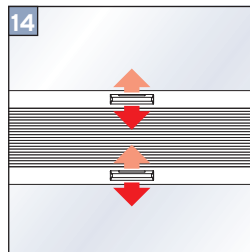
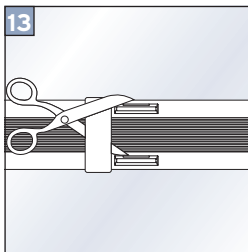
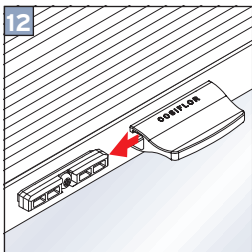
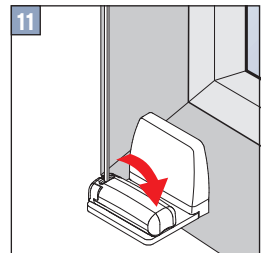
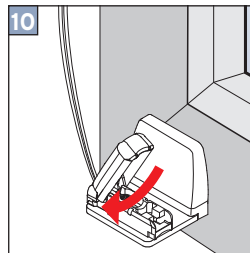
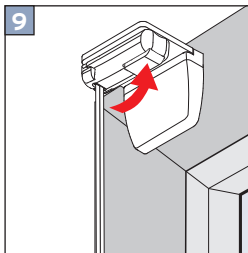
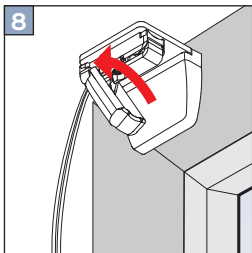
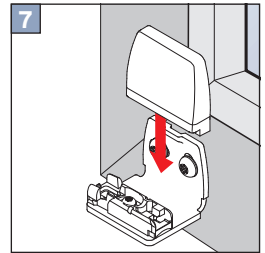
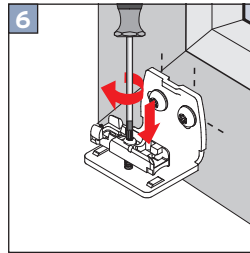
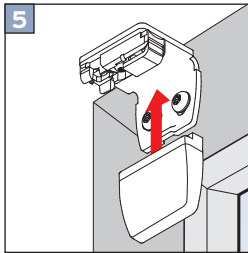
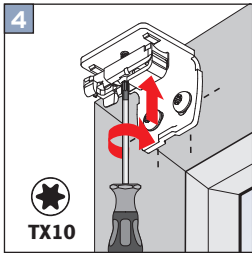
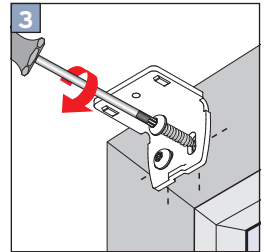
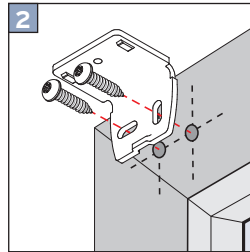
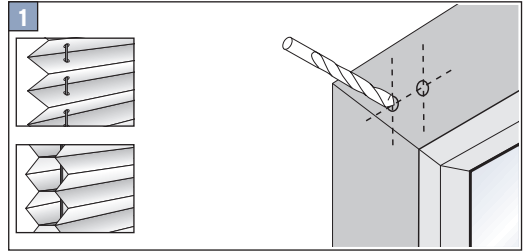
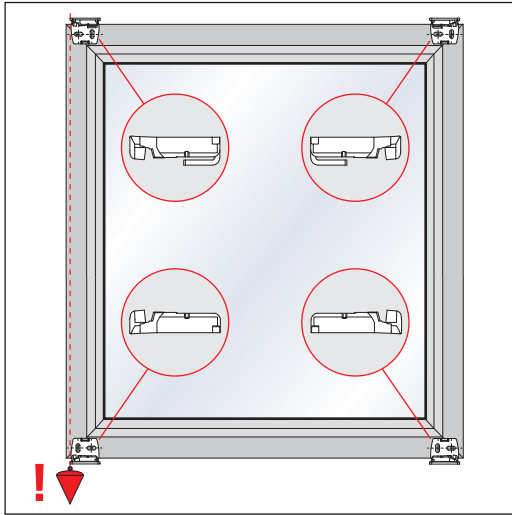


Falzmontage

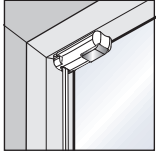




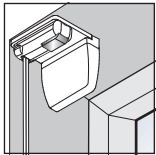
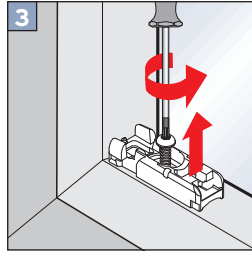
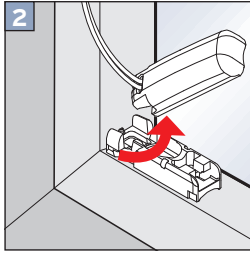
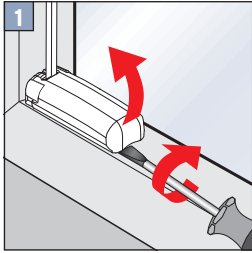
Winkelmontage



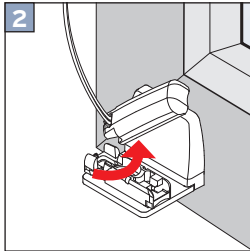
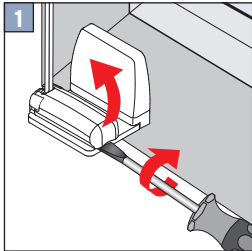
DEMONTAGE



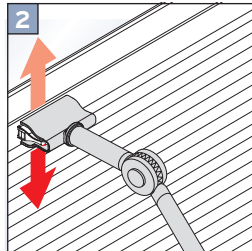
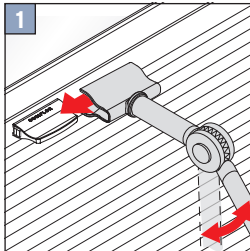
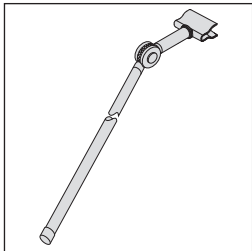
Falzmontage



Winkelmontage



Optional: Bedienstab



Das Plisseemodell VS2 ist wohl der beliebteste Plisseetyp unter den rechteckigen Plisseemodellen. Kein Wunder, denn VS2 Plissees sind in ihren Bedien- und Montagemöglichkeiten sehr flexibel. Dieses Plissee lässt sich von oben nach unten und von unten nach oben ganz nach Wunsch öffnen. Die [Auswahl der Montagearten](#) ist bei diesem Plisseetyp sehr vielfältig - ob verschraubt, geklemmt oder geklebt.

[Hier](#) geht es direkt zu unseren Plissees im Livoneo.de-Onlineshop!

Montageanleitungen für alle Plissees im [Überblick](#)